

POND AT JAIN TEMPLE PREMISES, MOODBIDRI

Energy and Wetland Research Group, Centre for Ecological Sciences,
 Indian Institute of Science, Bangalore; URL: <http://wgbis.ces.iisc.ernet.in/energy/>
 In Association with Alva's Education Foundation, Moodbidri



STAGE 1 (MAY 2016): PLANNING AND DISCUSSION



STAGE 2 (JULY 2016): IMPLEMENTATION

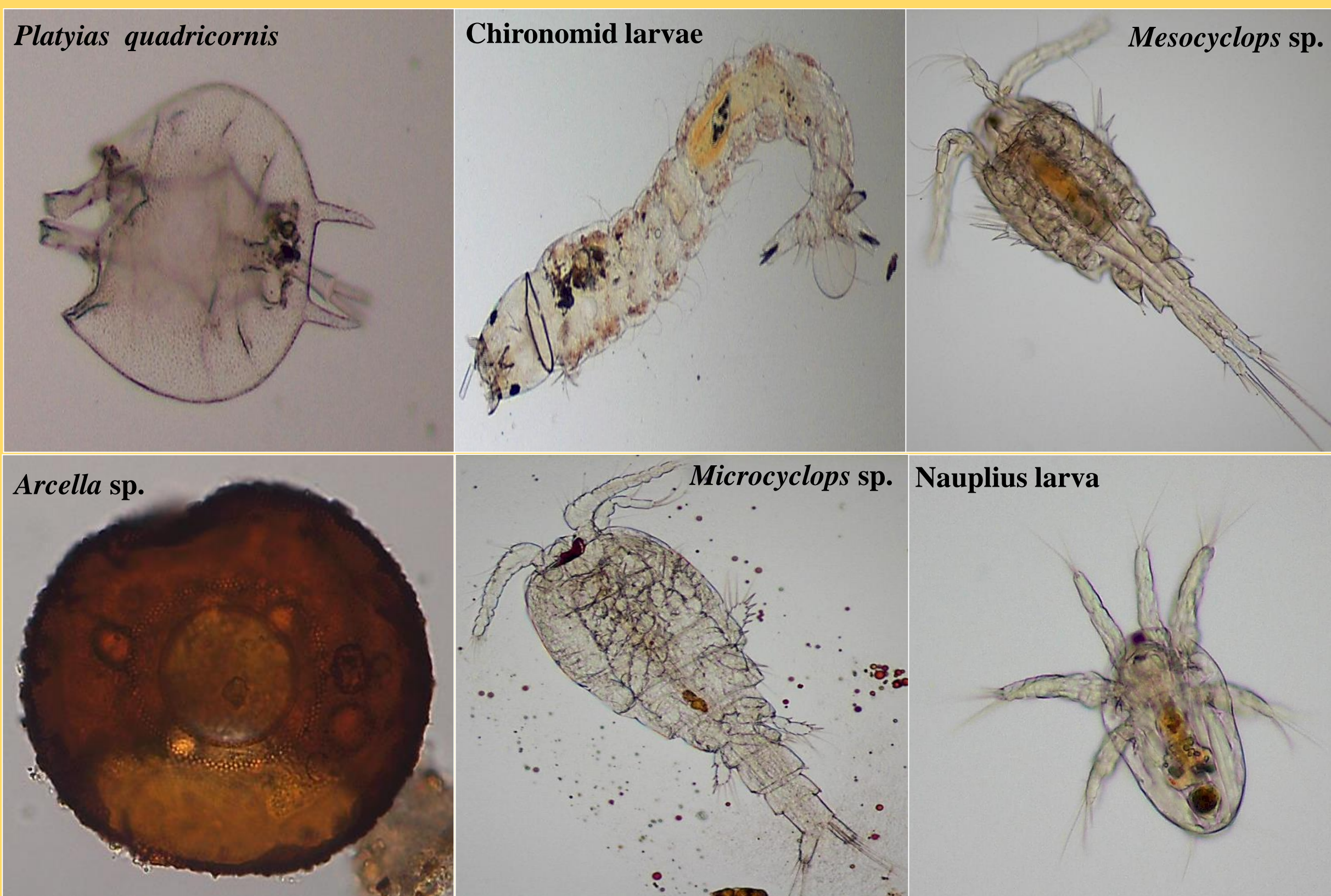


STAGE 3 (AUGUST 2016): MONITORING

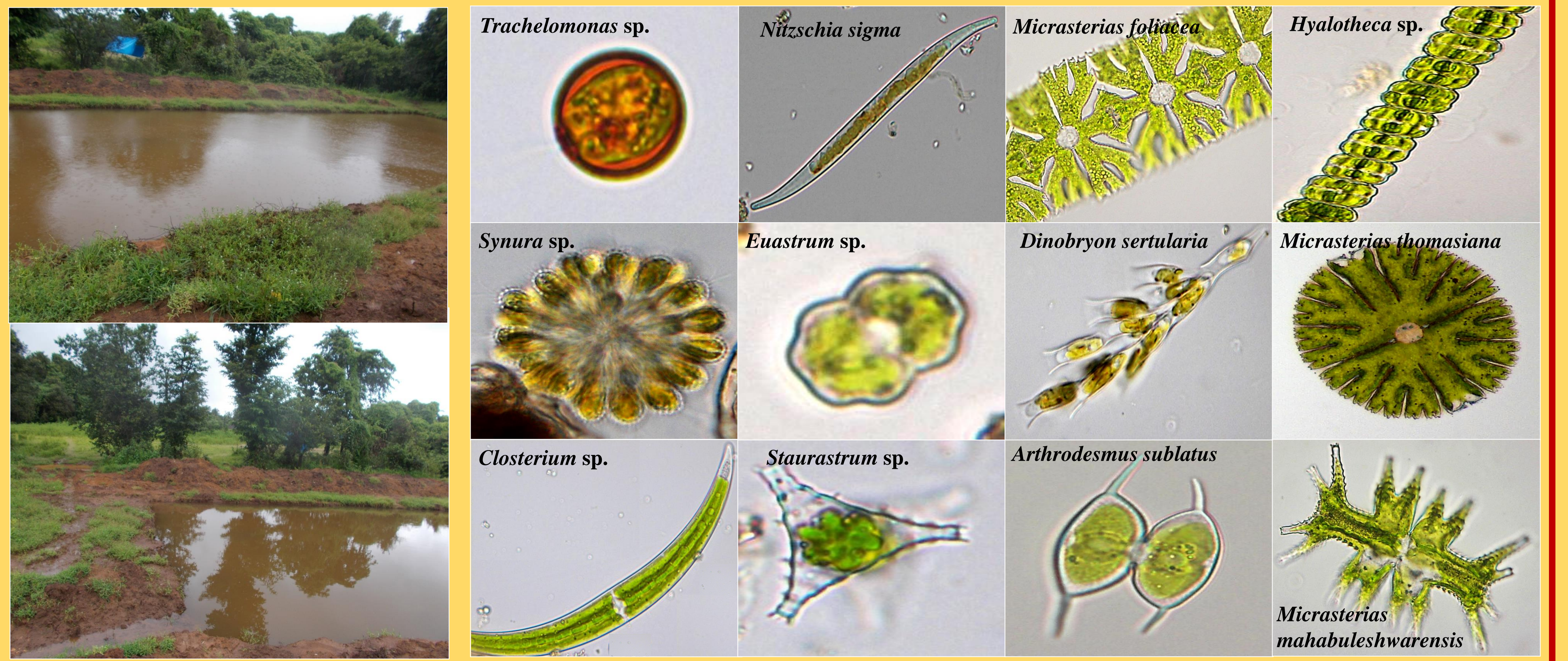


WATER QUALITY			
	Site1	Site2	Site3
pH	7.18	7.02	7.2
Electrical Conductivity (μ S)	32	33	33
Total Dissolved Solids (mg/l)	16	16	16
Dissolved Oxygen (mg/l)	8.23	8.06	8.06
Turbidity (NTU)	16.07	14.4	21.17
Alkalinity (mg/l)	30	30	34
Sodium (mg/l)	7.4	6.6	6.7
Potassium (mg/l)	0.7	0.7	0.7
Phosphate (mg/l)	0.5	0.55	0.68
Nitrate (mg/l)	0.03	0.03	0.04
COD (mg/l)	4	4	6
BOD (mg/l)	2.52	2.6	3.42
Total Hardness (mg/l)	14	16	14
Calcium Hardness (mg/l)	6	7	8
Chlorides (mg/l)	21.3	24.85	23.43

ZOOPLANKTON DIVERSITY



ALGAL DIVERSITY



ALVA'S
 EDUCATION FOUNDATION(R.), MOODUBIDIRE.
 Moulding a better tomorrow



Ramachandra T.V., Sudarshan P., Asulabha K.S., Sincy V., Vinay S.,
 Akhil C.A. and M.D. Subash Chandran
 Energy and Wetland Research Group, Centre for Ecological Sciences,
 Indian Institute of Science, Bangalore 560012
 Email: cestvr@ces.iisc.ernet.in, Phone: 080 22933099
 Web: <http://ces.iisc.ernet.in/energy>, <http://ces.iisc.ernet.in/biodiversity>